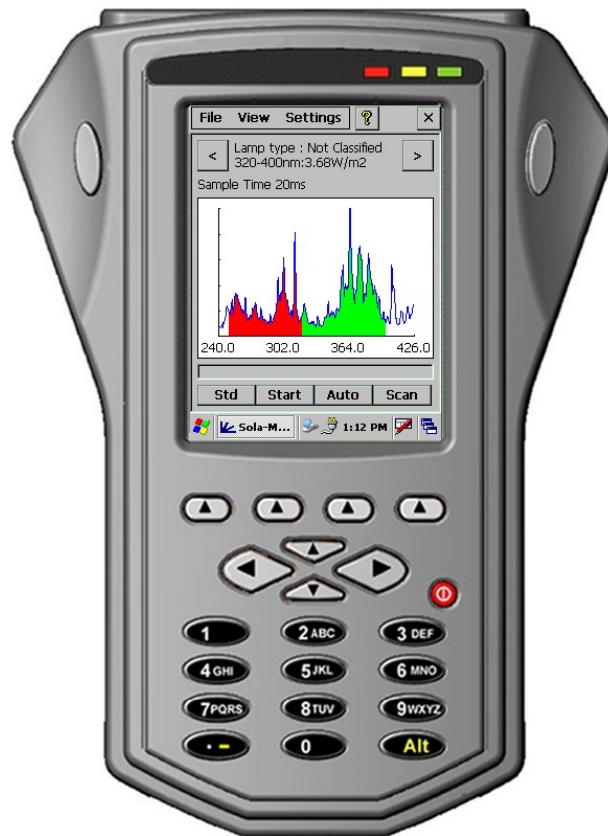


YOUR OPTICAL FIBRE SYSTEM UNDERSTOOD & UNDER CONTROL

Suitable for :  
**Fusion F450**  
**Fusion F600**  
**VPS Lamps**  
**Arc Lamps**



**For Optical Fibre Processes,  
 Draw Tower and Colouring  
 Machines**

**Portable, Rugged, Hand held  
 Spectroradiometer**

Your UV System:

- Measured
- Quantified
- Monitored
- Recorded
- Stored
- Compared
- Analysed
- Downloaded

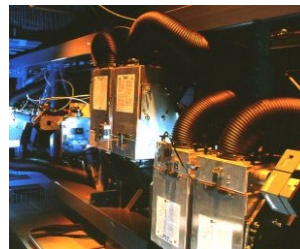


**Application : FIBRE OPTICS**

Your Optical Fibre process will benefit from the Sola-Check System

Check UV lamps regularly to :

- Predict lamp failure.
- Quality Control the UV cure process
- Avoid scrap fibre product
- Routine Maintenance of the UV lamps
- Save lamp replacement costs
- Troubleshoot the process

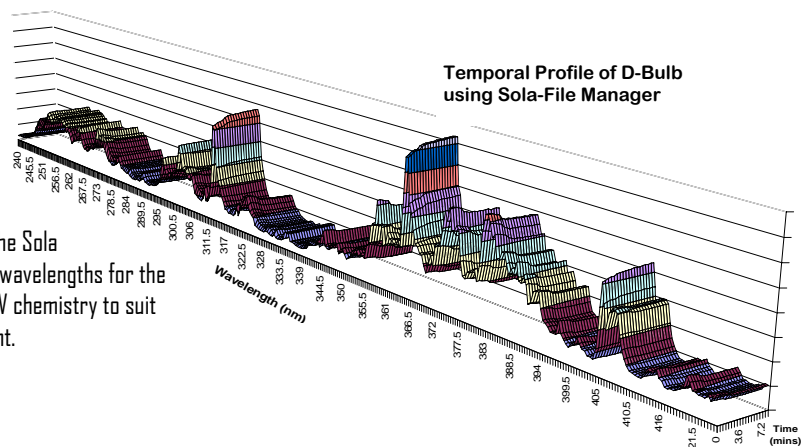


The Sola-Check System provides **Full Spectral Analysis** Simply and Accurately from 235nm to 470nm

A range of probes and accessories are available to enable simple access to the UV lamps for routine measurement  
 For UV Development and Process Control the Sola-Check System provides resolution at 1.0nm and programmable radiometric bands for detailed analysis of the UV Source. Intensity displayed in  $mW/cm^2$   
 Build a database of lamp performance using our Sola-File Manager download software.

The Sola-Check System identifies the spectrum and provides radiometric data in user-defined ranges.

For product development the Sola Check identifies important wavelengths for the development of effective UV chemistry to suit the UV process requirement.





## YOUR OPTICAL FIBRE SYSTEM UNDERSTOOD & UNDER CONTROL

Use the power of the Sola-Check System for your UV Process Development and Control. The Sola-Check System provides resolution at 0.5nm and programmable radiometric bands for detailed spectral analysis of the UV Source.

The Sola-Check System is a hand held, rugged device, highly portable and supplied in its own robust carry case with all cables, software, accessories and operating manual.

The intuitive Windows CE software guides the user by keypad and touch screen through the UV scanning, data storage and analysis of the UV spectrum.

The accompanying Sola-File Manager software enables fast download to PC and manipulation of the data files for efficient recall and quality assurance of UV data. Data is automatically transferred into Excel via Windows 2000 or Windows XP platforms.



### SOLA-CHECK SENSOR

#### OPTICS

- ❑ Single Grating spectrograph optimized For UV spectroradiometry using patented Solatell™ monolithic optics with 512 pixel UV array
- ❑ Cosine response domed diffuser.
- ❑ Selection of wavelength ranges between 235nm to 470nm depending on application.
- ❑ 0.5nm spectral sampling.
- ❑ 1nm bandwidth (+0.5nm/ -0nm).
- ❑ <10nW/cm<sup>2</sup>/nm sensitivity.
- ❑ >10<sup>7</sup> Dynamic range.
- ❑ >10<sup>3</sup> Stray Light Rejection ratio.

#### MECHANICAL

- ❑ Non-slip, tough ABS with aluminium housing.
- ❑ IP55, standard.
- ❑ 118x69x32mm.
- ❑ -20°C to +70°C storage.
- ❑ -10°C to +50°C operating.
- ❑ +15°C to +30°C full spec.
- ❑ 0 to 80% non condensing.

#### ELECTRICAL

- ❑ Internal 3V NiMh sealed battery pack.
- ❑ External +12V dc power supply (supplied) or +5V dc; +5%; 35mA supplied by Sola-Manager.
- ❑ RS232 serial printer drive.

#### USER INTERFACE

- ❑ Sample time by Auto Ranging and Smart-Scan.
- ❑ 32x97 pixel graphical display plus icons for charge state, memory, signal and real time clock.
- ❑ 7 button membrane tactile, sealed keypad.

#### Standard configuration includes:

Sola-Sensor, Sola-Manager, Battery Pack, Power Adapter/Battery Charger, Mains Power Cable, Communication Cable, PC Download USB Cable, Hand Strap, Touch Screen Pen and User manual.

*Note: Due to Solatell Ltd policy of continuous product improvement, specification is liable to change without notice.*

*Please consult your supplier, or Solatell Ltd direct for clarification if necessary. Patents granted on Solatell technology in more than one country. As a general measuring instrument, Solatell Sola-Sensors require periodic recalibration, usually annually.*

### SOLA-MANAGER

#### ENCLOSURE

- ❑ 186x93mm (narrowest point; 186x134mm (widest point).
- ❑ 700g weight.
- ❑ ¼ VGA colour touch screen.

#### ENVIRONMENTAL

- ❑ 2 metres drop test to Mil 810 spec.
- ❑ IP65 Dust and Water proof sealing.
- ❑ -10 to +50°C Operating Temperature.
- ❑ -20 to +60°C Storage Temperature.

#### SYSTEM

- ❑ 400 MHz X-scale - Intel PXA255 processor.
- ❑ Windows CE Net v4.2 Operating System.
- ❑ Li-Ion smart battery pack.
- ❑ Battery recharge via mains adapter.
- ❑ User indicators Red, amber, green LEDs.
- ❑ Communication via Active Sync.
- ❑ 23 key matrix keypad including alpha numeric keys, function keys and rapid fire keys.

#### MEMORY

- ❑ 32 Mbyte SDRAM.
- ❑ 32 Mbyte Flash Storage.
- ❑ PCMCIA Type II PC Card.
- ❑ Compact Flash Type II CF Card.
- ❑ MMC/SD Memory Card.

#### CONNECTIVITY

- ❑ USB 1.1

Application: **FIBRE OPTICS**

## Solatell Ltd

King Henry's Drive  
Croydon, CR9 0BG  
United Kingdom

Phone: +44 (0) 1689 808 033

Fax: +44 (0) 1689 845 117

E-mail: Salesteam@solatell.com

www.solatell.com